

# R-ES-0500-30-O-75

## 5-Port Outdoor Switch PoE+



### Accessories

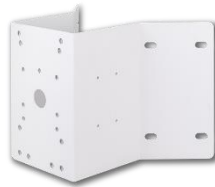
#### R-PMA



#### R-RPMA



#### R-CMA



### Technical Specification

#### Networking Specifications

Total Fast Ethernet Ports	5
Total Gigabit Ports	-
PoE Port @ EX Mode OFF	4x30W PoE ports
PoE Port @ EX Mode ON	2x30W EX PoE + 2x30W PoE ports
Fast Ethernet Ports (RJ45)	1
Gigabit RJ45/SFP Combo Ports	-
Mac Table	2K
Jumbo Frames	1,536 Bytes
Switching Capacity	1 Gbps

#### Power Specifications

Input Voltage	100VAC ~ 240VAC 280VAC 4Hr 300VAC 1min.
Backup Power Input Voltage	48VDC ~ 56VDC
Output Voltage Range /per PoE Port	54VDC PoE IEEE 802.3af (Max. 15.4W) output PoE+ IEEE802.3at (Max. 30W) output
PSE Power Pin Assignment	12(+),36(-)
PoE Surge Protection	6KV
AC Power Surge Protection	10KV
Power Budget	75W

#### Mechanical Specifications

Dimensions (L x W x H)	255.2 x 199.9 x 90 mm
Weight	3.2 kg
Connectors	M25 x 2

#### Environmental Specifications

Weather Rating	IP67
Vandal Proof	IK10
Operating Temperature	-40°C ~ 65°C
Storage Temperature	-40°C ~ 85°C
Operating Humidity	5% ~ 95% non-condensing

#### Certifications

EMC	CE, FCC, VCCI, C-Tick Class A
Safety	EN62368-1
Surge	EN61000-4-5